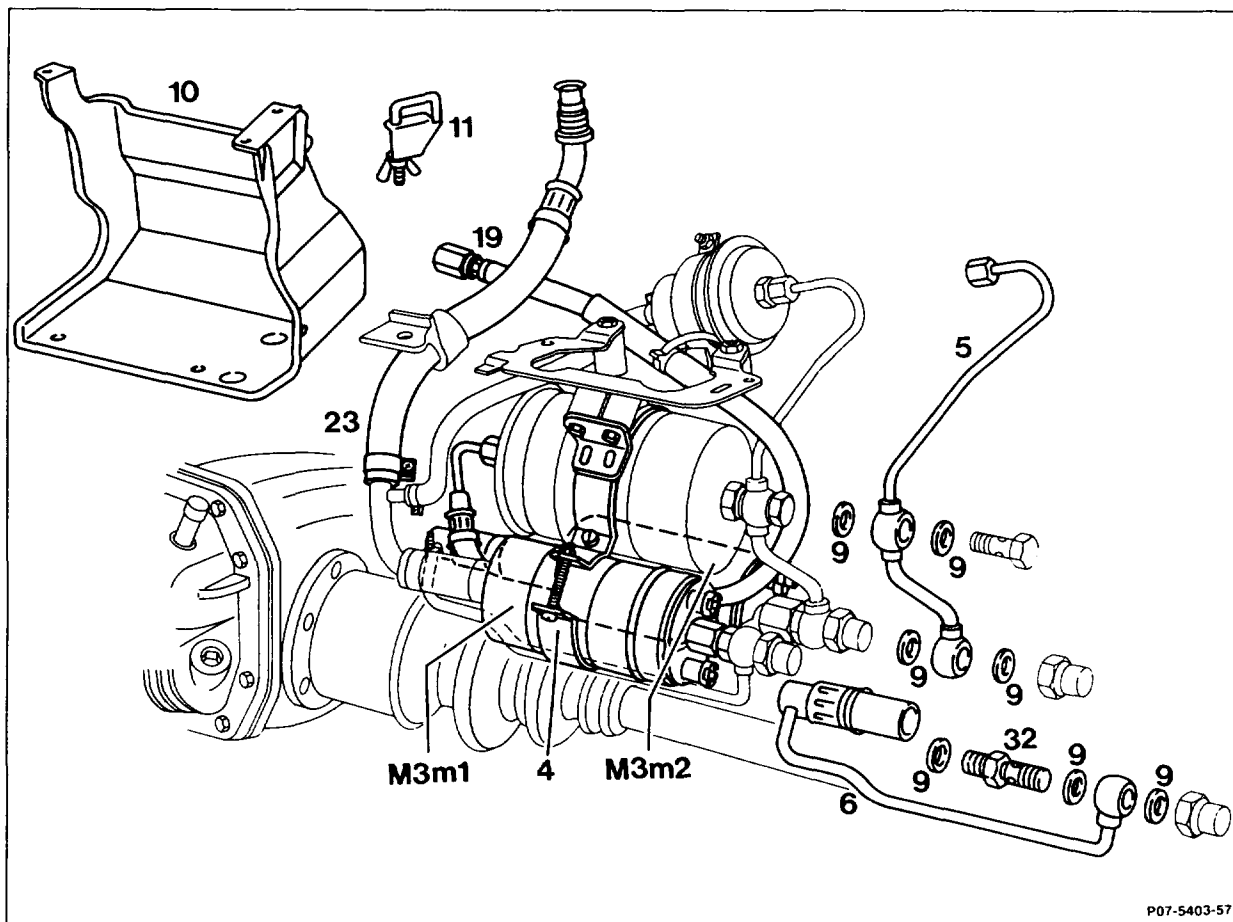


07.3-5820 Replacing non-return valve for fuel pump

Operation no. of operation texts and work units or standard texts
and flat rates:
07-5820, 07-5821.



P07-5403-57

Pressure in fuel tank	release by opening cap, close.
Ground cable at battery	disconnect, connect.
Protective box (10)	unscrew, screw on.
Fuel suction hose and fuel pressure hose (19, 23)	pinch off with clamp (11). Special tool 000 589 40 37 00.
Fuel suction hose (23)	slacken and pull off.

Replacing non-return valve on fuel pump 1

(M3m1):

Securing bolt at holder (4) for fuel pump, slacken, tighten.

Note

When tightening the securing bolt at holder (4), it is essential to ensure that the plastic sleeve must project on both sides of the holder as direct contact of the fuel filter with the holder can cause contact corrosion.

Fuel pipe (6) unscrew, screw on.
Cap nut unscrew, screw on.
Fuel pump 1 (M3m1) push to the left.
Non-return valve (32) remove, install. Tightening torque 22 Nm.
Copper seals (9) replace.
Leaktightness of all connection points check with engine running.

Replacing non-return valve on fuel pump 2

(M3m2):

Fuel line (5) between fuel pump, fuel filter and fuel accumulator, unscrew, screw on.
Cap nut unscrew, screw on.
Non-return valve (32) remove, install. Tightening torque 22 Nm.
Copper seals (9) replace.
Leaktightness of all connection points check with engine running.

Special tool

