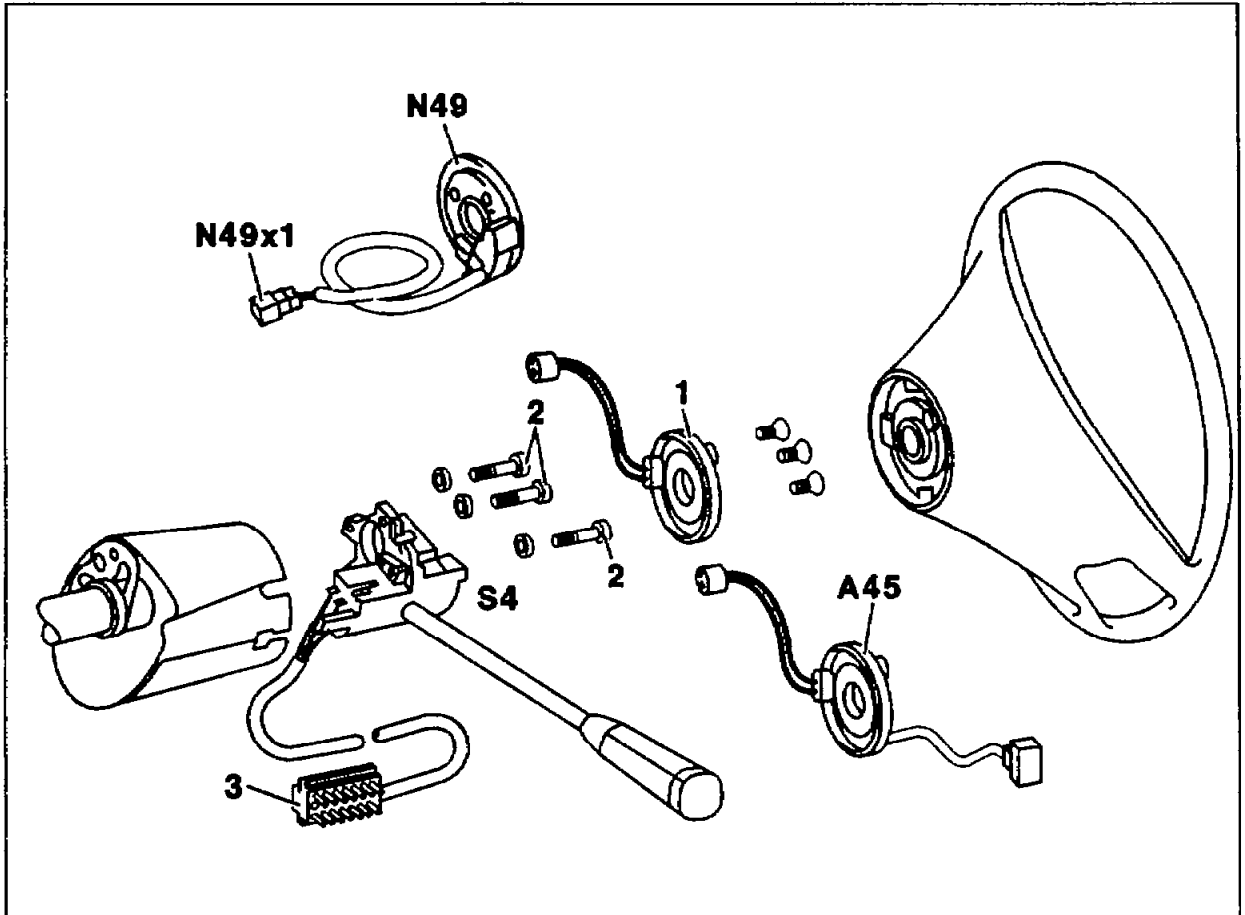


54-2800 Removing and installing combination switch

Preceding work:
Steering wheel removed (46-610).
Cover below instrument panel removed (68-150).

Operation no. of operation texts and work units or standard texts
and flat rates:



P54-6571-57

Battery ground cable disconnect, reconnect.

Vehicles up to 05/93 with airbag

Cover plate (1) remove, install.

Vehicles with 4MATIC

Steering angle sensor (N49) remove, install; unplug connector (N49/1) for this step, plug in.



After connecting the power supply, the steering angle sensor (N49) has to be reactivated. With engine running, turn the steering once from full left to full right lock. The indicator light goes out.

Vehicles as of 06/93 with contact spiral

Contact spiral (A45) remove, install (46-8300).

All vehicles

Phillips screws (2) screw out, screw in.

14-pin plug (3) for combination switch (S4) below
instrument panel disconnect, reconnect.

Combination switch (S4) remove from jacket tube panelling, reinstall.