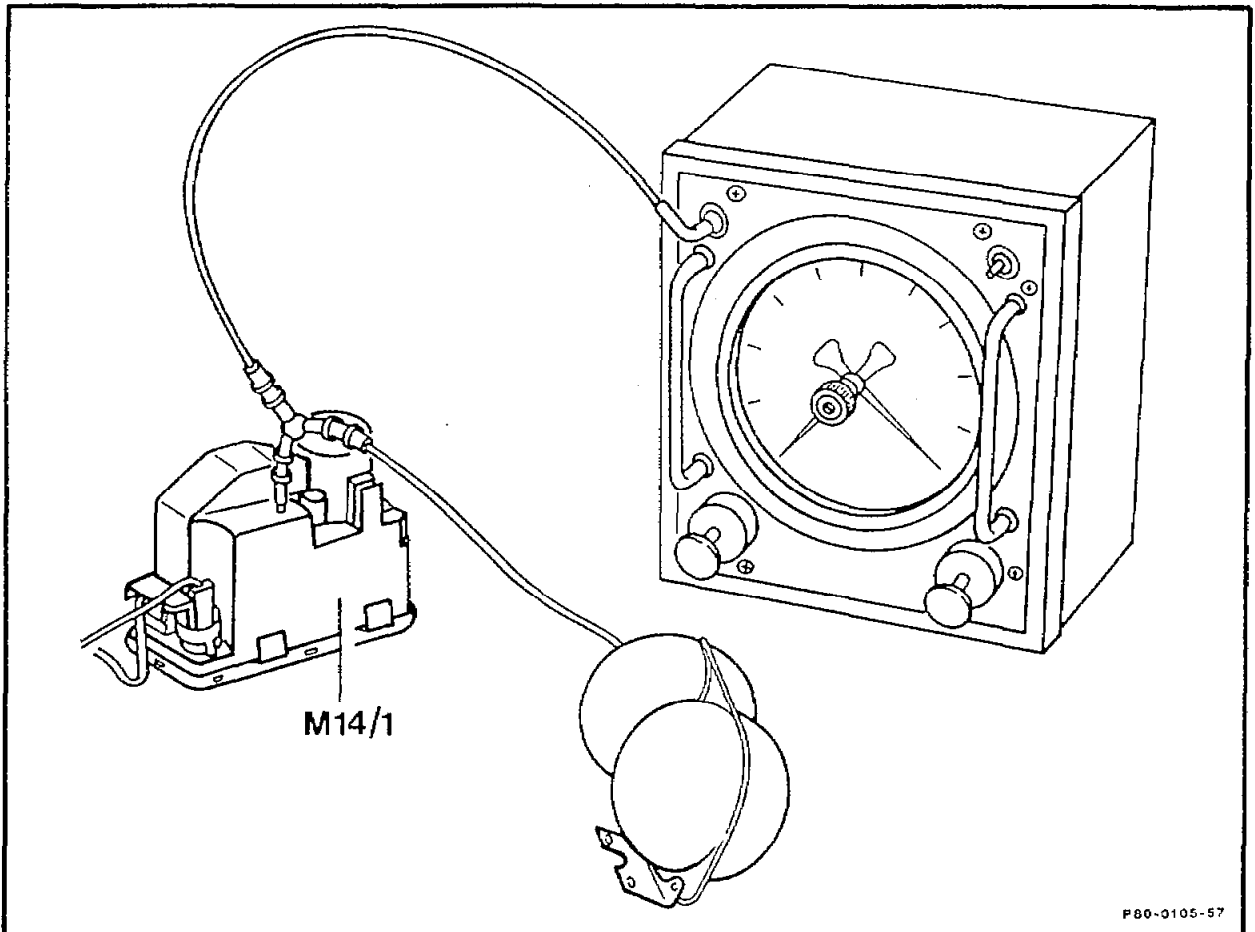


80-108 Checking pneumatic function of supply pump

Preceding operation:
Checking function of central locking system (80-090)

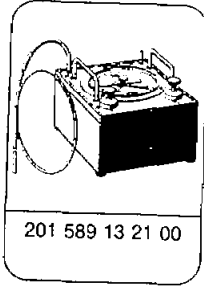
Operation no. of operation texts and work units
or standard texts and flat rates 80-0030

1st version except \textcircled{D} as of 03/94 and vehicles with code 885



Prepare test	Steps 1 – 3
Check vacuum of supply pump when locking	> 420 mbar in ≤ 3 s
Check pressure of supply pump when unlocking	> 420 mbar in ≤ 3 s
Check safety switching time when disconnecting supply pump from line system	approx. 25 – 150 s

Special tool



Parts for test

Container	107 800 08 19
Multiple connector	117 078 01 45
Sealing cap	000 987 11 45

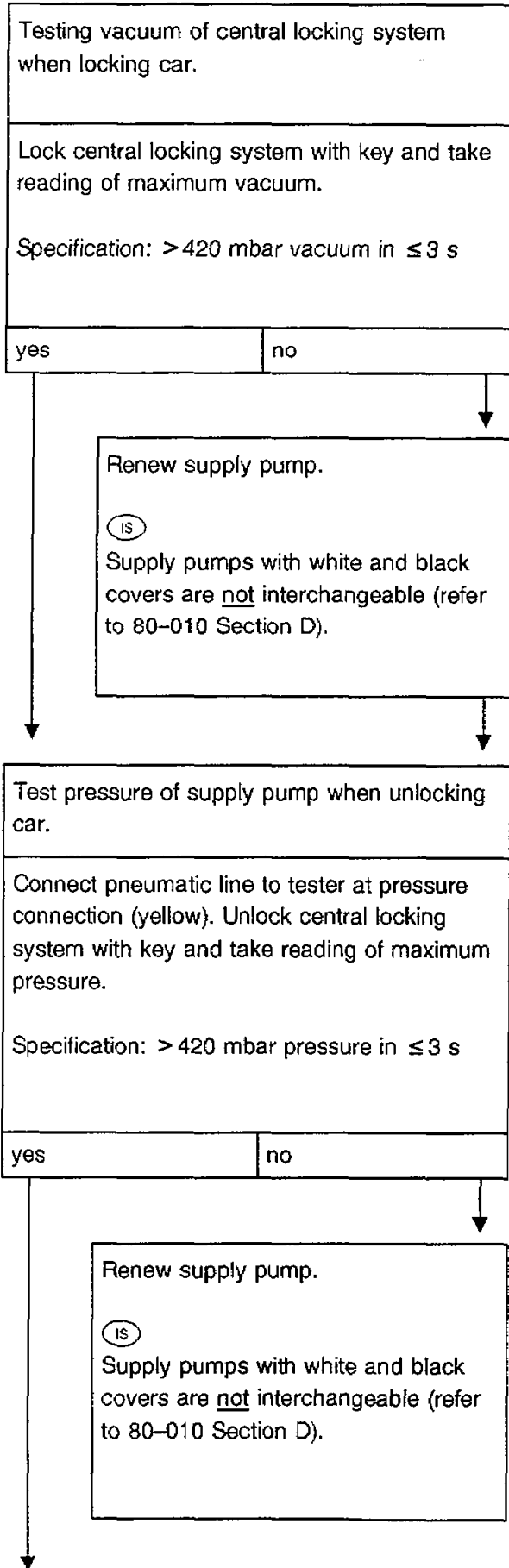
Preparing test

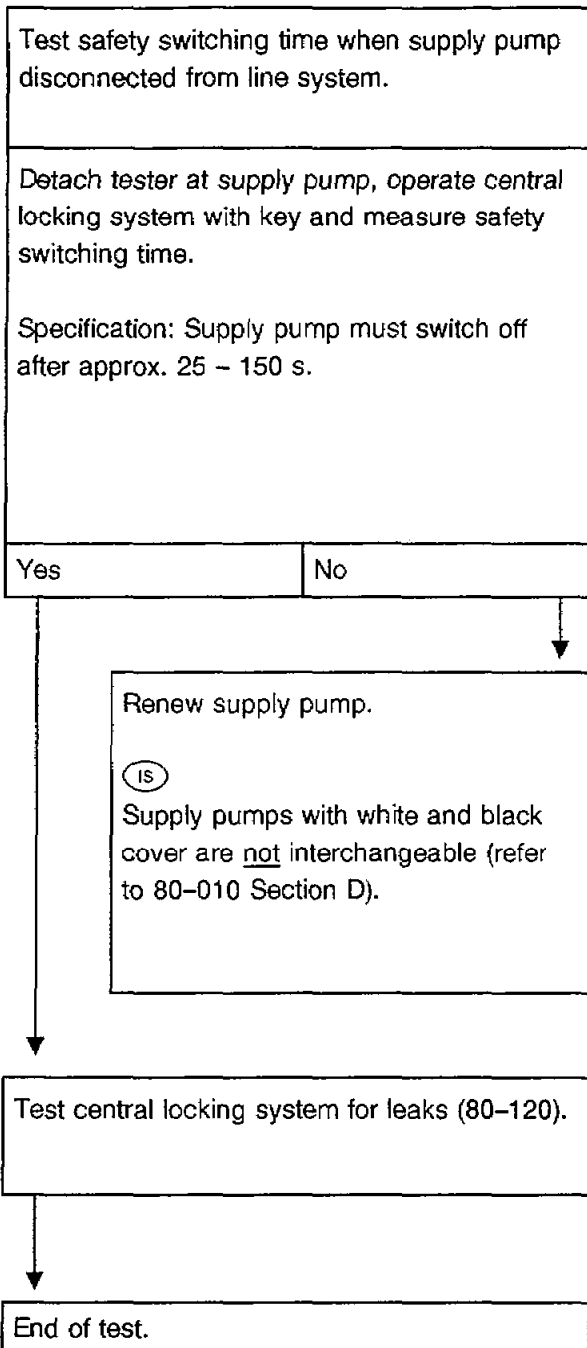
- 1 Connect container with multiple connector to tester 201 589 13 21 00 at the vacuum end (black connection).
- 2 Remove supply pump and detach pneumatic line (80-270).
- 3 Connect tester 201 589 13 21 00 with container to supply pump (M14/1).

Note

If supply pump fitted with pneumatic connection for orthopedic backrest, seal latter with cap Part No. 000 987 11 45.

Test





2nd version for Ⓢ only as of 03/94 and vehicles with code 885

See diagnosis manual