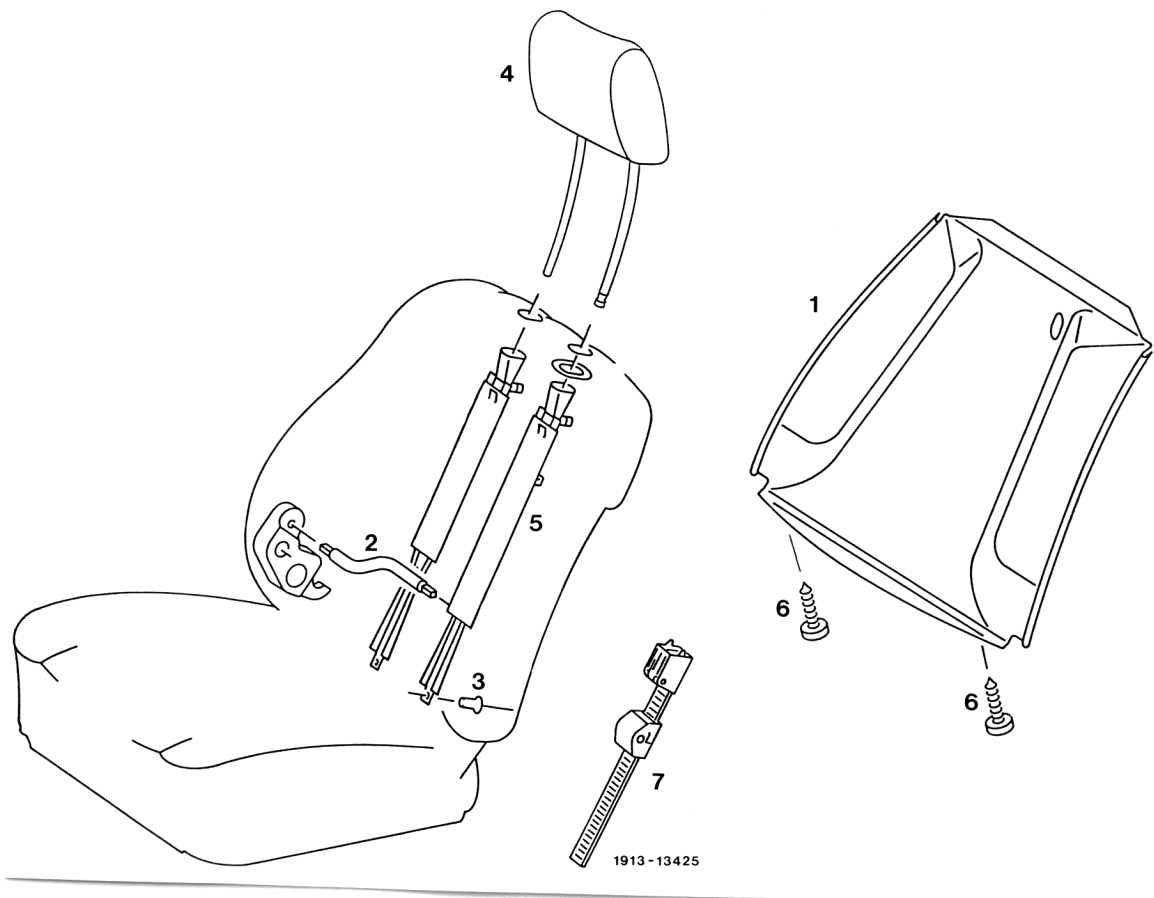


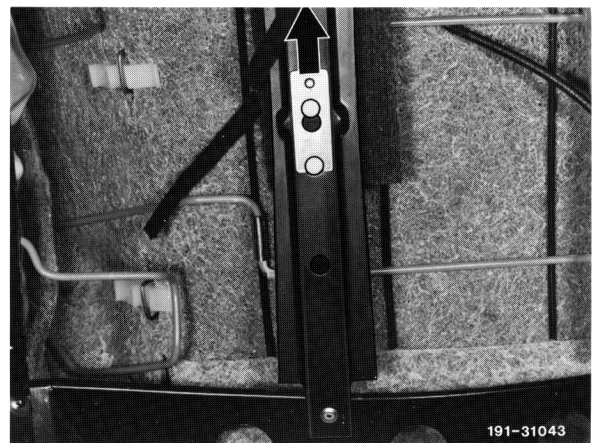
91-060 Removal and installation of adjusting rail for head restraint



Head restraint (4)	remove and install
Clamping member (1)	remove and install (91-190)
Flexible shaft (2) on adjusting rail (7)	pull out

Remove and install

- 1 Pull off damping and slide lock in upward direction.
- 2 Remove adjusting rail (7).
- 3 For installation proceed vice versa.



191-31043